

**Burlington
Livestock
Exchange**

Steve Schneider, Owner 620-376-2577
Dennie Flock, Manager 719-349-1991
Charlene Flock, Office Manager
Jim Bob Paintin, Asst. Mgr. 719-349-5286
PO Box 39, Burlington CO 80807



"More Bucks for your Livestock"

July 21, 2016

Office 719-346-8900
Fax 719-346-7545
Perry White, Field Rep 719-743-2191
Mike Griebel, Field Rep 719-349-1253
Web page: www.bleinc.com
Email: ble@rebeltec.net

For our auction on Thursday, July 21 the bulk of our run was made up of slaughter cows & bulls. They sold fully steady. On a light test the stocker feeder cattle sold 4 to 5 dollars higher. We will be closed July 28 for KCC Fair.

STEERS

Crossland, James	7 bwf	407	180.00
Crosland, James	3 blk	618	149.00
O'Brien, Jim	1 blk	825	128.00

HEIFERS

Crossland, James	2 bwf	370	143.00
Crossland, James	7 bwf	485	142.00
O'Brien, Jim	4 xbred	785	117.50



COW MARKET

High Yield Cows	75.00 to 78.00
Boning Cows	68.00 to 74.00
Slaughter & Feeding Bulls	85.00 to 92.00

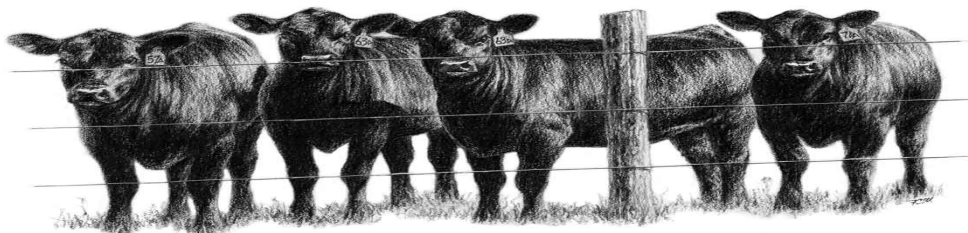
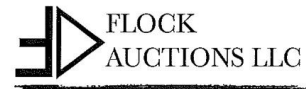
Schedule of Events

July 28 ~ Closed
August 4 ~ Regular Cattle Sale
August 11 ~ Regular Cattle Sale

**Equipment, Vehicles, & Tool
Consignment Auction**

August 27, 2016

2363 Beechcraft Ave., Burlington CO
Advertising Deadline : August 15



To sign up for weekly
consignment & market
list by email go to
www.bleinc.com
& Sign up.